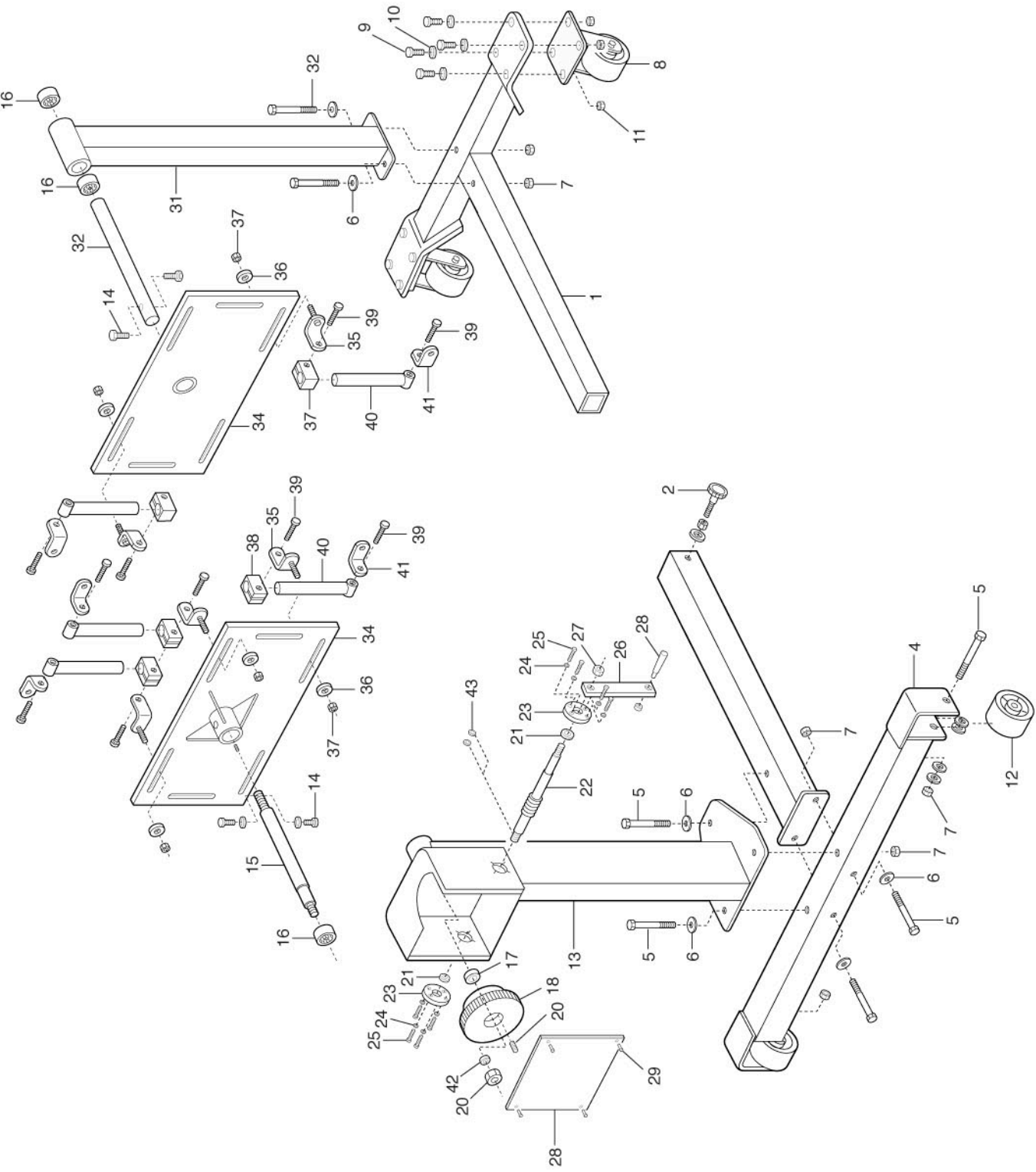


DESCRIPTION
HEAVY-DUTY ENGINE REPAIR STAND

CAPACITY
1 TON

MODEL NO.
78200

REPLACEMENT PARTS



INDEX NO.	DESCRIPTION	PART NO.	REQ'D NO
1	Cross Beam	B0614	1
2	Fastened Screw	B0658	1
3	Connected Beam	B0613	1
4	Bolster	B0612	1
5	Bolt	H0140	7
6	Washer	J0019	7
7	Hex. Nut	H0195	6
8	Caster	B0608	8
9	Screw	H0181	8
10	Washer	J0163	8
11	Hex. Nut	H0182	2
12	Caster	F0234	2
13	Main Post	B0251	1
14	Screw	H0141	2
15	Stud	E0377	1
16	Bearing	K0022	1
17	Bearing	K0024	1
18	Worm Gear	F0235	1
19	Key	K0020	1
20	Nut	H0167	1
21	T-Bearing	K0021	2
22	Worm Stud	E0378	1
23	Bearing Housing	E0379	2
24	Spring Washer	J0036	8
25	Screw	H0095	8
26	Connecting Strip	C0238	1
27	Hex. Nut	H0061	1
28	Handle	B0267	1
29	Cover	C0654	1
30	Screw	H0097	4
31	Secondary Post	B0252	1
32	Bolt	H0157	2
33	Axle	E0386	1
34	Mounting Board	B0565	2
35	Fixing Assy.	B0253	8
36	Washer	J0142	8
37	Nut	H0020	8
38	Movable Adapter	E0380	8
39	Screw	H0185	16
40	Brace	D0254	8
41	Fixing Bracket	C0241	8
42	Spring Washer	J0085	1
43	Nut	E0375	2